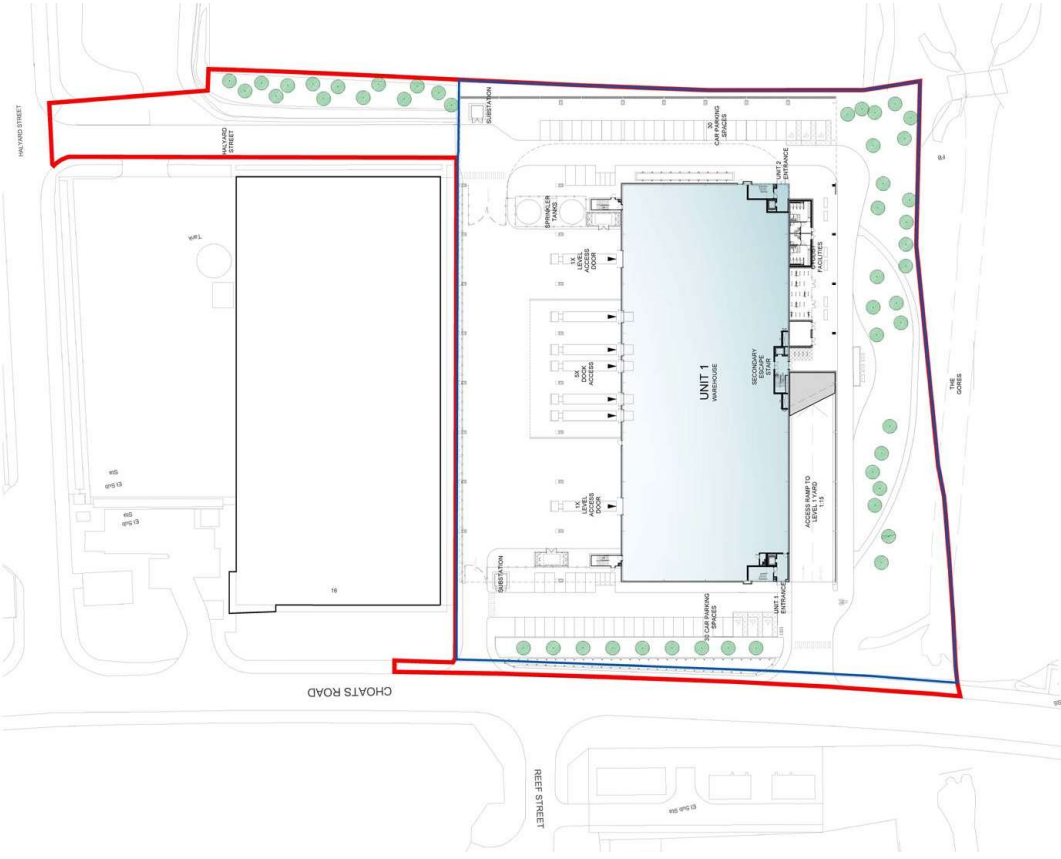


Indicative Site Layout Plan - Single Storey

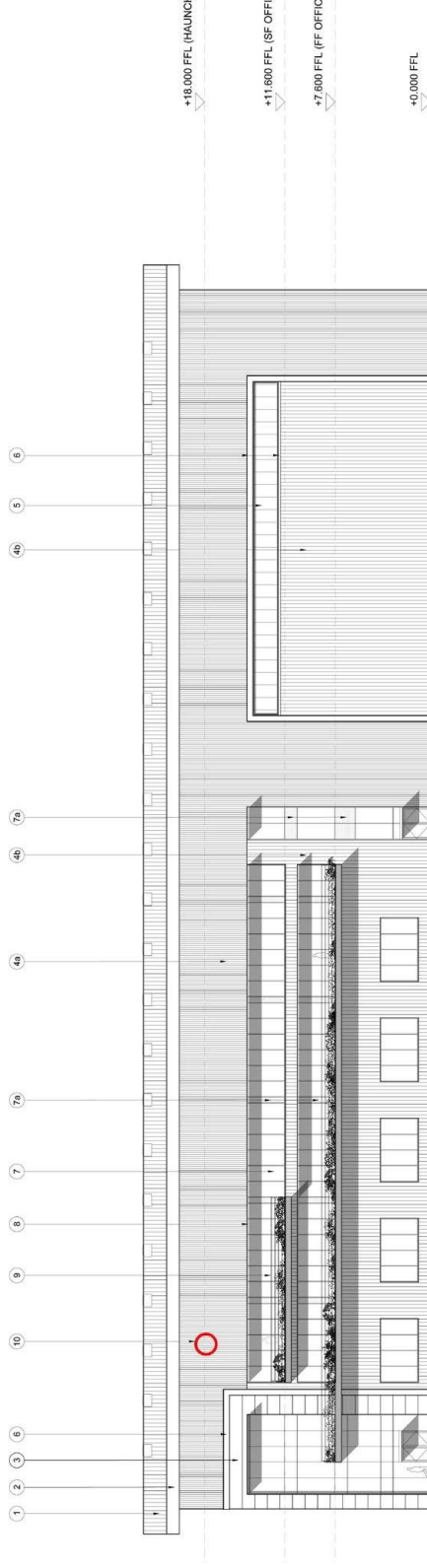


Indicative Site Layout Plan - Multi Storey

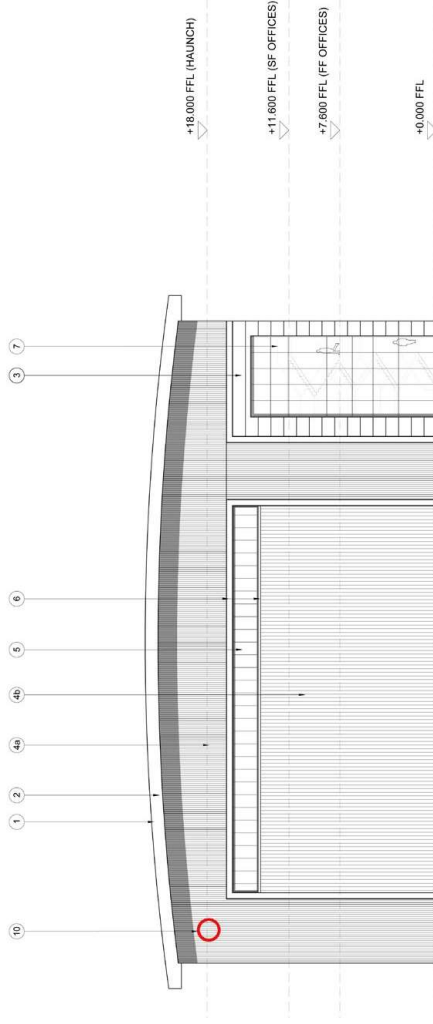
6.8 APPEARANCE

The application is in outline, therefore the design will be subject to further stages in the design process and will be subject to future reserved matters consents.

The indicative elevations illustrate the aspiration of the applicant to achieve a vision for a modern business park where building uses good quality and sustainable materials and is laid out to respond, flexibly and elegantly, to business needs of the prospective occupiers.



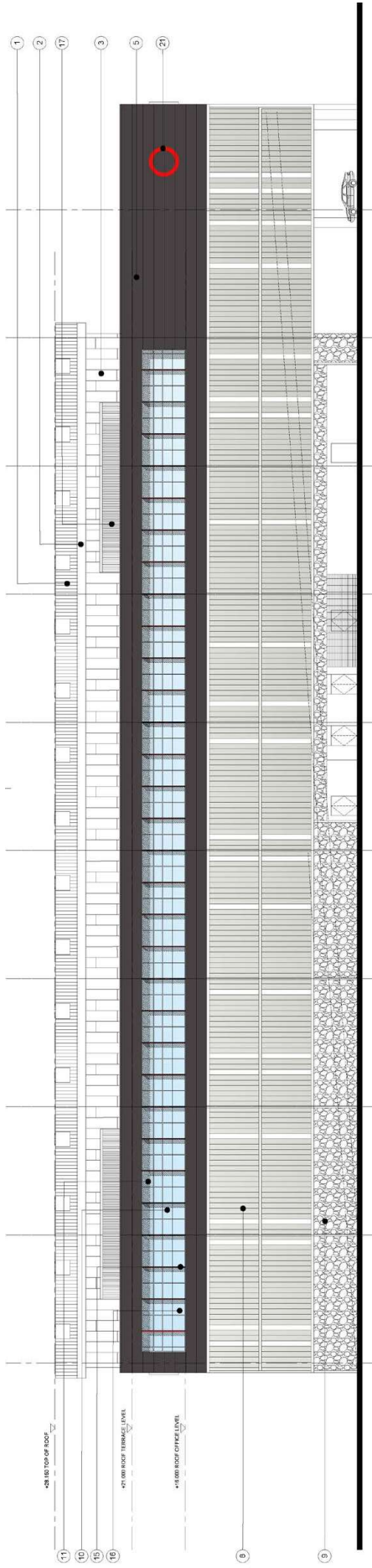
Indicative West Elevation - Single Storey



Indicative North Elevation - Single Storey

SCHEDULE OF FACING MATERIALS:

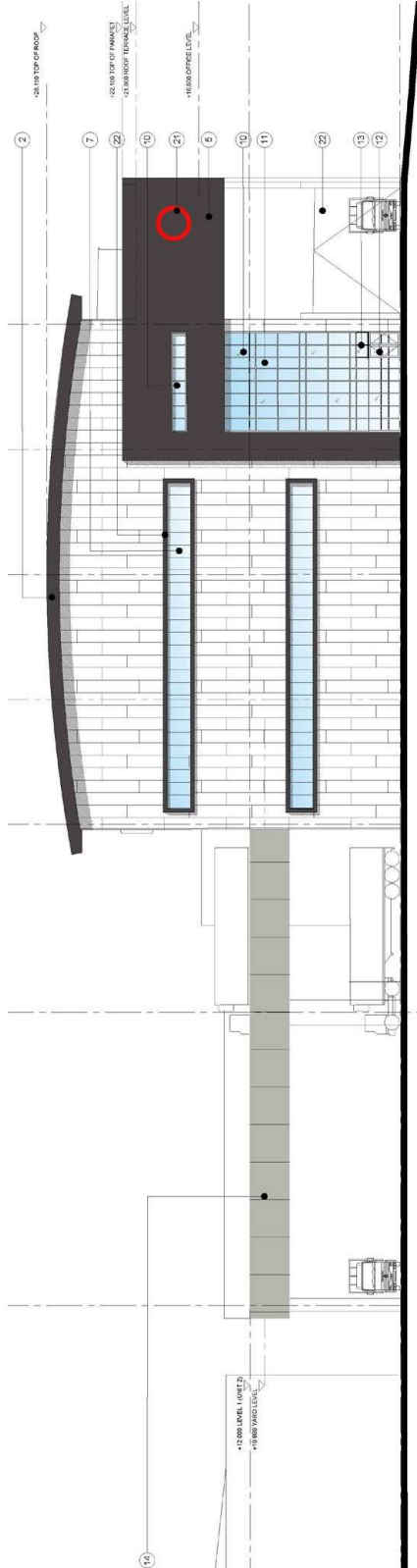
1	Curved Metal Roof	Build-up standing seam roof system Colour: HPS200 Colourocoat - Albatross
2	Metal Soffit and Fascia	2mm aluminium flat panel secret fixed cladding. Colour: PPC - Anthracite - Dark Grey
3	Flat Metal Cladding Panels	Flat composite panel, horizontal orientation Colour: Colourocoat Prima - Anthracite - dark grey.
4	Profiled Metal Cladding	Translucent profiled steel built up cladding system, vertical orientation 4a - Light Silver; 4b - Dark Silver.
5	Translucent Opaque Panels	Translucent panel, vertical orientation; Colour: White Opaque
6	Feature Band	0.7 steel profile, Colour: Colourocoat Prima- dark silver
7	Curain Walling	Glazed curtain walling with polyester powder coated aluminium sy frame and capping Glass Colour: clear anti-sun glass Frame Colour: PPC - Anthracite, RAL 7016 7a - spandrel panel, glazed with inner pane ceramic Anthracite ba 7b - spandrel panel, glazed with inner pane ceramic Anthracite ba
8	Office Brise Soleil	PPC perforated aluminium plate fixed to curtain walling frame, ven orientation, Colour: PPC Anthracite - dark grey.
9	Balcony Balustrade	Stainless steel circular handrail installed at 1.1m high
10	Building Signage	50mm deep aluminium primed Segro Red 'O' letter fixed to e cladding, Colour: PPC SEGRO Red



Inductive West Elevation - Multi Storey

SCHEDULE OF FACING MATERIALS:

- | | | |
|----|-------------------------------------|---|
| 1 | Coned Metal Roof | Brushed metallic aluminium panels
Colour: HPS200, Colourcode: Alcobron |
| 2 | Metal Soffit and Fascia | Paint aluminium flat plate secret fixed cladding
Colour: PPC - Anthracite - Dark Grey |
| 3 | Profiled Cladding A | Triaxonal profiled steel built up cladding system (vertical orientation)
Colour: Colourcoat Prima - Light, Medium & Dark Silver |
| 4 | Profiled Cladding B | Triaxonal profiled steel built up cladding system (vertical orientation)
Colour: Colourcoat Prima - Silver Metallic |
| 5 | Flat Metal Cladding Panels Type A | Flat composite panel, horizontal orientation
Colour: Colourcoat Prima - Anthracite - dark grey |
| 6 | Flat Metal Cladding Panels Type B | Flat composite panel, horizontal orientation
Colour: Colourcoat Prima - Silver Metallic |
| 7 | Translucent Opaque Panels | Translucent panel, vertical orientation
Colour: White Opaque |
| 8 | Profiled glass screen | Translucent panel, vertical orientation
Colour: White Opaque and Clear in a dark grey PPC steel frame |
| 9 | Carbon Cladding | Carbon baskets with facing stone |
| 10 | Curtain Walling | Glazed curtain walling with polyester powder coated aluminium frame
Glass Colour: Clear and-tan glass
120" spigot curtain glazing with frame pane ceramic-Anthracite
Colour of the frame: aluminium-anthracite, RAL 7016 |
| 11 | Spandrel Panels | Glazed entrance door (main) curtain walling full height put be
Glass entrance canopy |
| 12 | Entrance Doors | Brushed concrete balustrade panels |
| 13 | Glass Canopy | 50mm deep PPC perforated aluminium flat plate fixed to cladding frame, vertical orientation, Color: PPC Anthracite - dark grey/red edge Colour: PPC SEGRO Red |
| 14 | Service Yards and Ramp's Balustrade | 1.2m high toughened and laminated glazed balustrade - Glass C clear, Stainless steel circular handrails installed at 1.1m high |
| 15 | Office Bive Sidel | Aluminium or steel continuous louvre, Colour: PPC SEGRO Red frame |
| 16 | Office Balcony Balustrade | Painted metal factory finished, colour: light silver with dark grey frame |
| 17 | Ramp Room Screen | Painted metal factory finished, colour: light silver with dark grey frame |
| 18 | Personnel Door | Painted metal factory finished, colour: light silver with dark grey frame |
| 19 | Loading Doors - level access | Painted metal factory finished, colour: light silver with dark grey frame |
| 20 | Loading Doors - dock level access | 50mm deep aluminium perforated Signo Red 17 letter fixed fixed cladding, Colour: PPC SEGRO Red |
| 21 | Building Signage | Pressed metal finished band, 300x300mm Anthracite grey |
| 22 | Feature Bands | Concrete ramp on concrete or steel columns |
| 23 | Rampis | |



Inductive North Elevation - Multi Storey